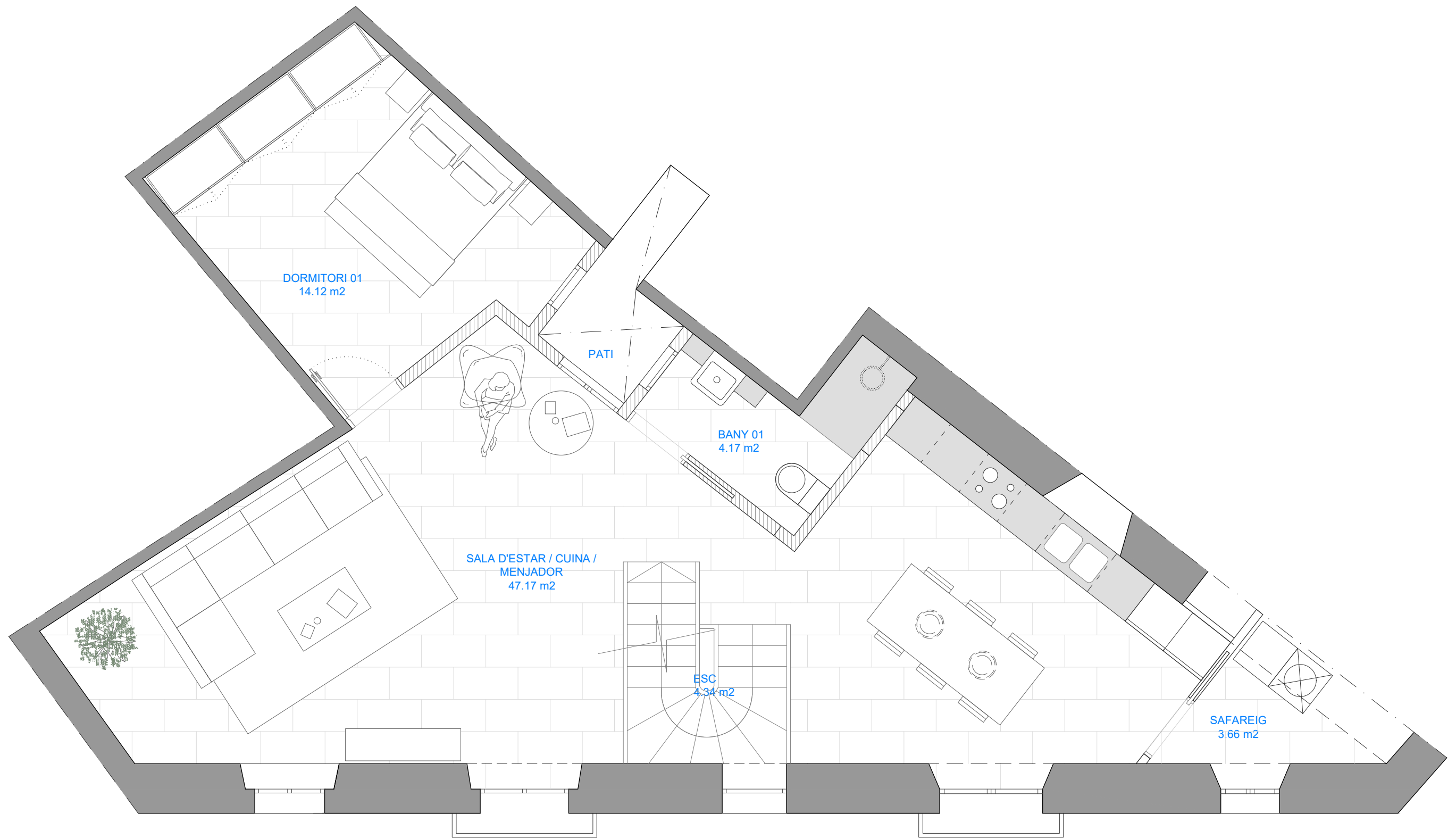


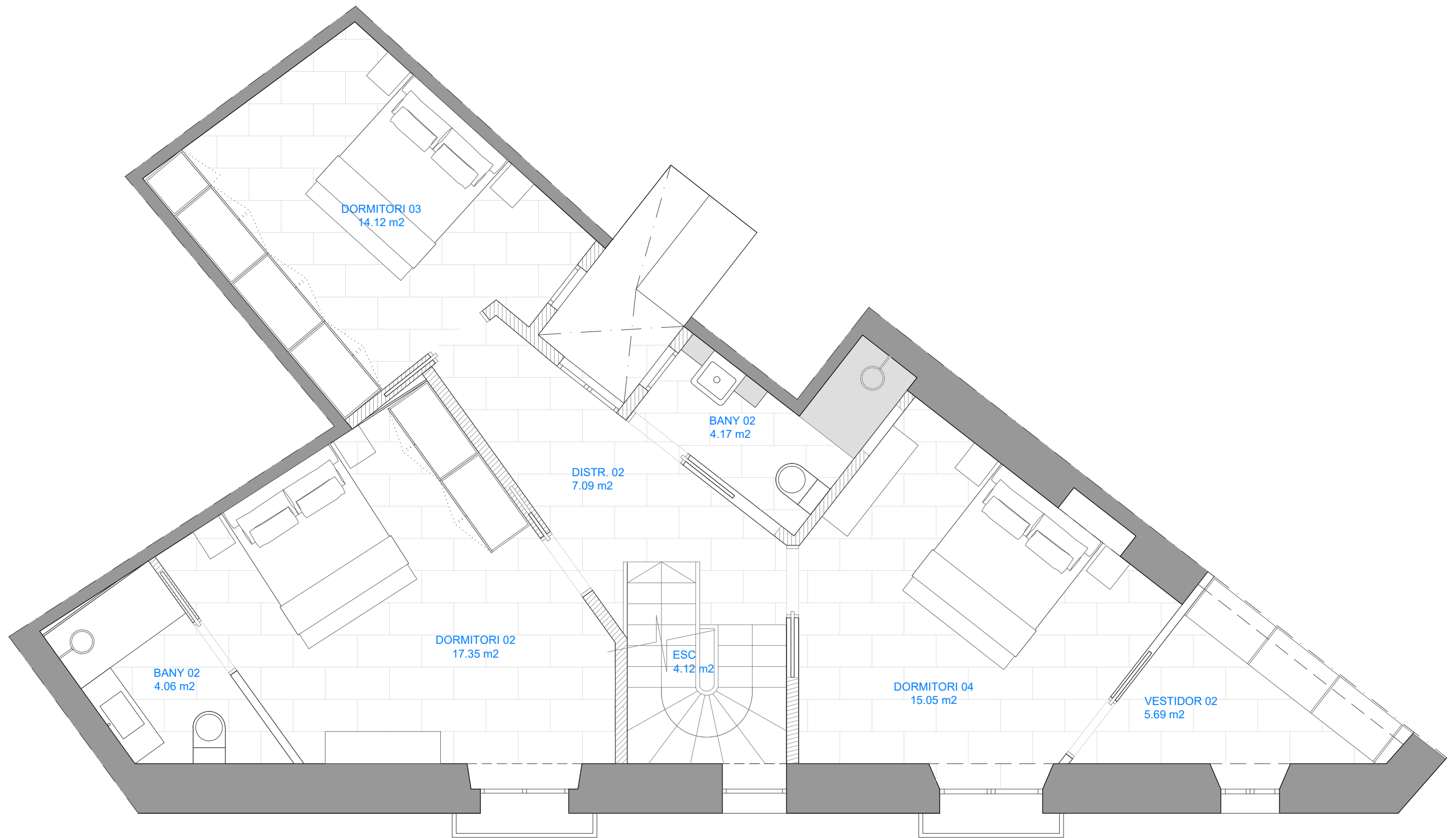
PLANTA BAIXA

Sup. Útil total: 70,22 m²
Sup. Construïda total: 87,80 m²



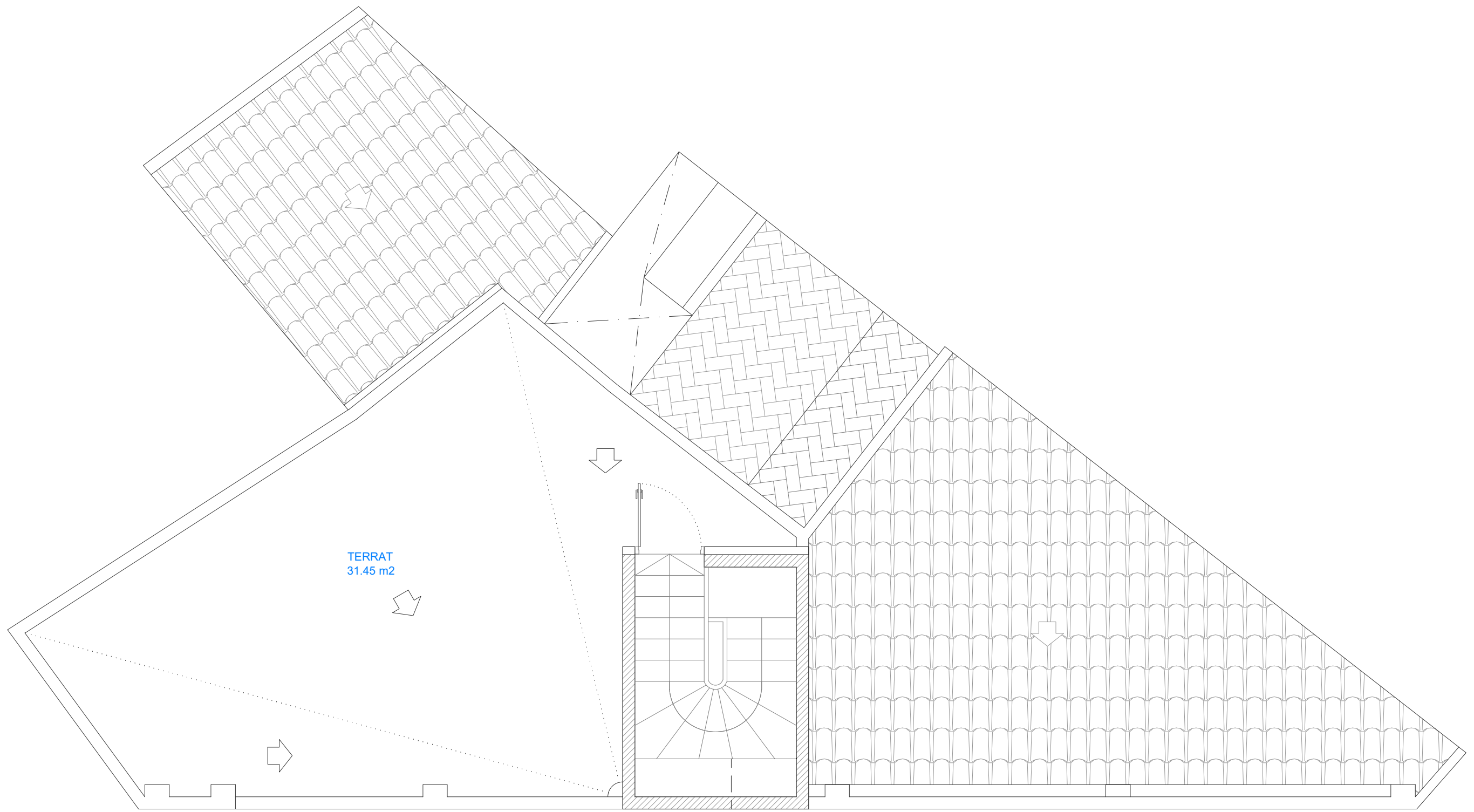
PLANTA PRIMERA

Sup. Útil total: 73,46 m²
Sup. Construïda total: 90,90 m²



PLANTA SEGONA

Sup. Útil total: 73,46 m2
Sup. Construïda total: 90,90 m2



PLANTA SEGONA
Sup. Construïda total: 7,30 m2